

Model 882 Twin Capacity Liquid Bag Housing

PFP's Twin Capacity Liquid Filtration housing gives you the capability of higher flow rates at an economical cost. They are a good choice to use in applications where a high dirt-holding capacity is required or a low pressure drop is needed. They can be used with our strainer baskets alone or paired with our bag filters, giving you a wide variety of choices for flow rates and particulate removal.

FEATURES

- **2 Model 88-30 housings with common connections**
- **Increased flow rates**
- **Lower differential pressure**
- **Carbon or stainless steel construction**
- **150 PSI pressure rating**
- **Quick swing closure with eye nuts**
- **Viton seals - lid & basket**
- **Differential, drain, and vent ports**
- **Adjustable support legs**
- **316 stainless steel strainer baskets**



Our 150 PSI vessel effectively removes dirt, pipe scale, and other contaminants from process liquids such as water, chemical, and petroleum products. Quality construction and design assure protection for all down-stream equipment.

VESSEL CONSTRUCTION Our model 882 vessel is designed for operating up to 150 PSI at 300 degrees Fahrenheit. The housing design provides a large sump area at the bottom of the basket for dirt and scale accumulation. This design utilizes the filter more efficiently and prolongs the element life.

The **basket** seals onto an o-ring to eliminate particulate bypass between the basket and seat. Optional **mesh-lined strainer baskets** and **o-rings** are available. Please refer to their individual brochures in our liquid catalog.

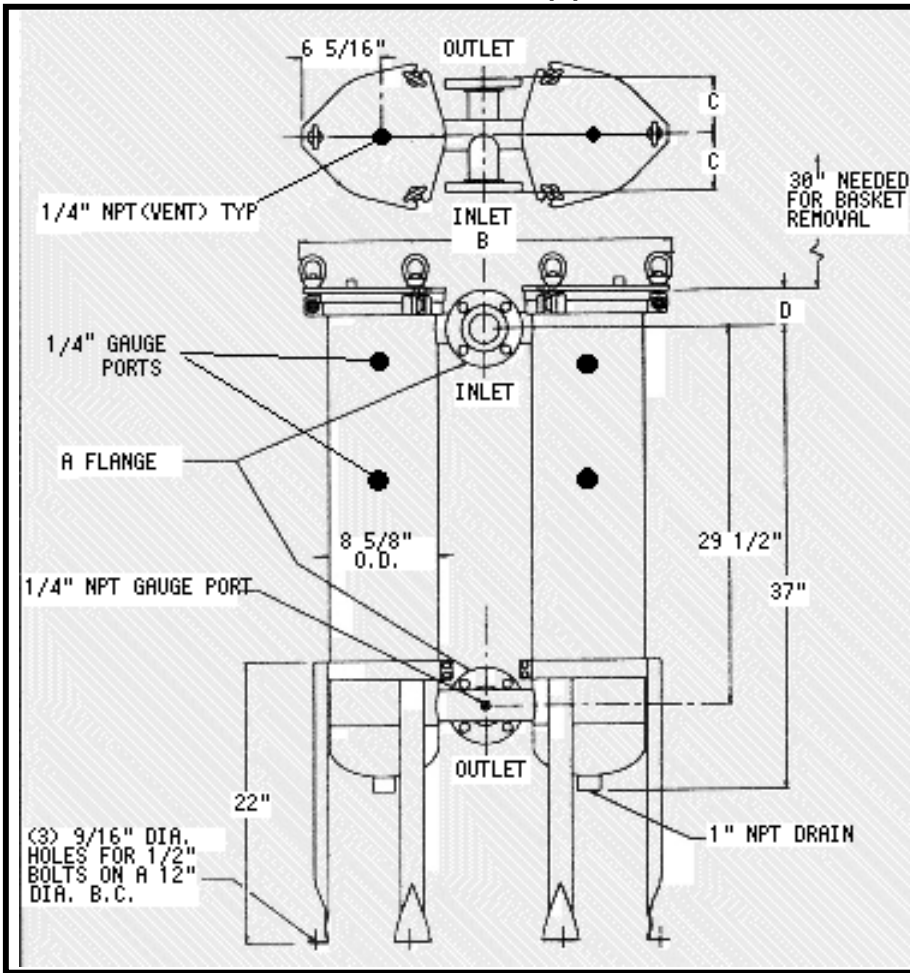
A **vent** and a **gauge** port in each housing lid and a **drain port** in each housing speed evacuation and filling. Permanently piped housings are opened with simple tools without disturbing the piping. **Swing bolts** with eye-nuts allow easy opening and closing of the swing-lid. No need to remove any hardware. As a standard finish, all vessels are blast cleaned and painted inside and out with a **2-part epoxy**. Stainless steel vessels are supplied with a satin finish.

All dimensions are approximate.

A	Flange Dimension		
	2"	3"	4"
B	30	32	34
C	4.5	5.5	6.5
D	2.875	3.75	3.75

SPECIFICATIONS

Housing lid has a 3-bolt swing closure with a vent and gauge port. Connections are side inlet and side outlet. Housings are supplied with two differential pressure ports to measure the differential pressure across the filter bag. A two-part epoxy finish is applied on the carbon steel vessels to maximize the life of the housing; stainless steel vessels are supplied with a satin finish. Basket material is manufactured from 316 stainless steel with 9/64" perforations to act as a strainer or to accept a #2 size liquid bag. Basket seals onto a Viton o-ring in the basket support. Adjustable tripod leg assembly is supplied with housing. Vessels are rated at a 150 pounds per square inch design.



Building a Part Number for Model 882

EXAMPLE: L882FC15

Description: Model 882, 2" flanged connections, outlet style side in & out, carbon steel construction and 150 PSI rating.

L882	2	F	C	15
HOUSING	CONN SIZE (IN)	CONN TYPE	MATERIAL	PSI
L882	2	FLANGE=F	CARBON=C	150
	3		304SS=4	
	4		316SS=6	