

125 PSI BAG FILTER HOUSING

Precision Filtration Products
YOUR ONE  FOR FILTERS.

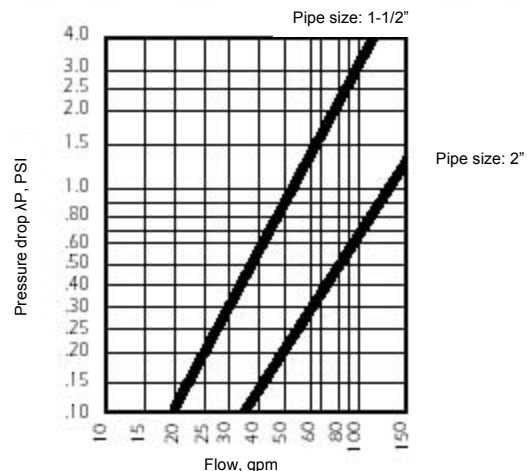
Bag Filter Housings

Low cost filter housings for flow rates to 100 gpm*

These high-capacity bag filters are low in cost and offer more dirt holding capacity. These housings are made from carbon steel or stainless steel. They use a newly designed clamp cover that is easily removed, reducing time spent on cleaning and bag replacement. Housings also utilize our Unistyle design offering you the option of a side or bottom outlet. There is a 1-1/2-inch or 2-inch inlet and outlet on the side, with a 1-1/2-inch or 2-inch plugged drain at the bottom of the housing. The outlet can easily be changed to the bottom by merely moving the plug from the drain to the side outlet.

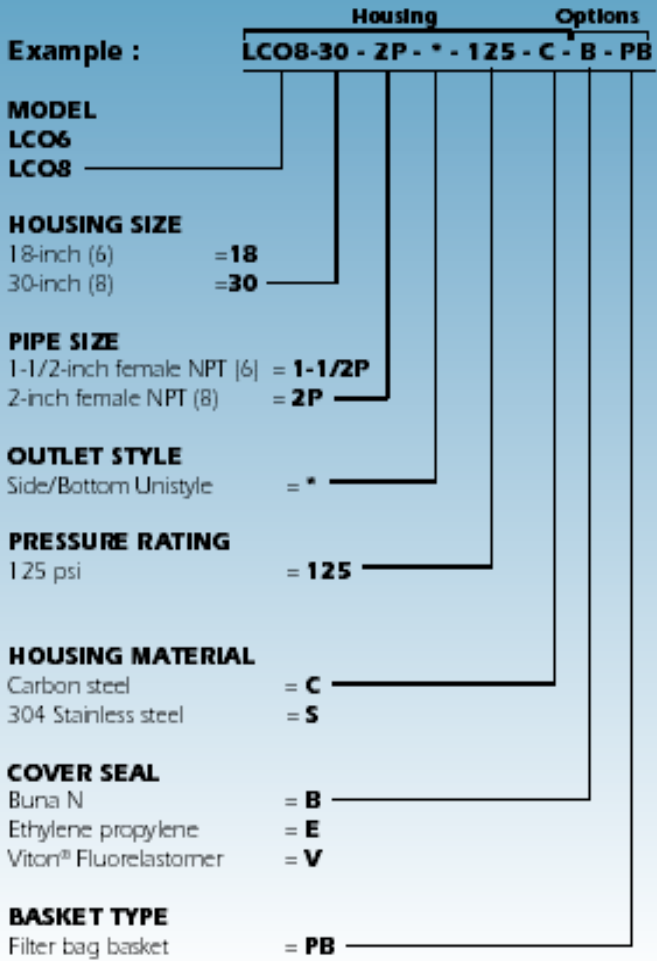
Features

- Permanently piped housings are opened without special tools
- Quick opening cover
- Carbon or stainless steel housings
- Large area bag and basket for greater dirt-holding capacity
- O-ring seals: Buna N, EPR and Viton®
- Adjustable-height tripod legs
- 125 psi rated housing
- Basket material is compatible with housing
- Bag surface area is 5.6 square feet (LCO8), and 2.0 square feet (LCO6)
- Uses number 12 size bags (LCO8), and number 8 size bags (LCO6)
- 2-inch NPT ports (LCO8), and 1-1/2-inch ports (LCO6)



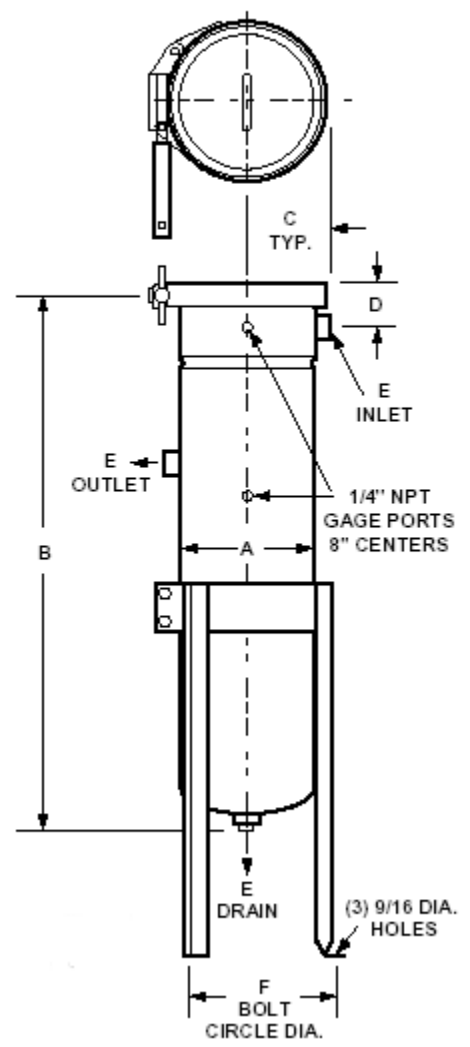
*Based on housing only. Fluid viscosity, filter bag used, and expected dirt loading should be considered when sizing a filter.

LCO Filter Housing



1. Filter bags are specified separately. See page 106-109.

Dimensions (IN)



MODEL NUMBER & Dim. A	B	C	D	E	F	PSI	Weight, lb (Approx)
6 (6.0)	28	4.3	3	1.5	9.5	125	50
8 (8.6)	35.9	6	3.5	2	12	125	70