



# LCFC Filter Cart

Flow Rates available in 1 GPM, 5 GPM, 11 GPM and 22 GPM

Our LCFC Liquid Cartridge Filter Cart is the ideal filtration system for the recirculating or transferring of fluids in and out of reservoirs and holding tanks. It is ideal for high viscosity lubrication and hydraulic oils.

The LCFC is the perfect filtration unit to use when high levels of particulate contamination are present. The high surface area yields extended service life of the filter elements reducing downtime and filter change-outs.

The LCFC Filter Cart is manufactured with U.S. made epoxy coated steel. It has large 10" non-shred rubber wheels with swivel/locking casters for ease of portability. All tubing is 304 Stainless Steel for a large compatibility range.

The standard cart is compatible with petroleum and mineral based fluids. For polyol ester, phosphate ester, and other specified synthetics use our Viton® seal option or contact factory.



LCFC Filter Cart Above Shown with 5 GPM Pump and Optional Particle Counter

### Recommended Viscosity Range\*

5 GPM\*: 28 SSU ~ 4000 SSU, 6 cSt ~ 800 cSt

11 GPM\*: 28 SSU ~ 4000 SSU, 6 cSt ~ 800 cSt

22 GPM\*: 28 SSU ~ 2000 SSU, 6 cSt ~ 400 cSt

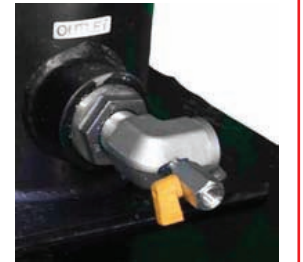
\*At maximum viscosity clean element pressure drop on 6M media code < 10 psid. Please check maximum viscosity of oil in coldest condition.

### Advantages:

- BETA 1000 Rated Filter Elements per ISO 16889 Standards
- Single or Double Length Element Options
- Water Removal Filter Elements
- Condition Bulk Oil Before Use
- Extend Service Life of Oil
- ISO Viscosity Range of ISO 22 to ISO 320



Differential Pressure Gauge with Stainless Steel Tubing



Oil Sampling Ports

### Standard Features:\*

- 1, 5, 11, and 22 GPM Flow Rates
- 115 VAC 60 Hz 1P Electrical Service
- Internal Pressure Relief on pump @ 100 PSI
- 45 PSID True Differential Pressure Gauge
- (2) Oil Sampling Ports
- System Pressure Gauge
- Hour Meter
- (1) Vent Relief Valve
- (2) Drain Valves
- (2) Medium Pressure Hydraulic Hoses

### Drains



\*Additional options are available upon request. All carts can be completely customized to your specific application.



VFD (Optional)



Spin-On Strainer (Optional)



Proudly Made



In the USA

New oil is clean? On average, new oil delivered from a drum has a cleanliness level of ISO Code 22/21/19. Water content from new oil averages 200 to 300 PPM.

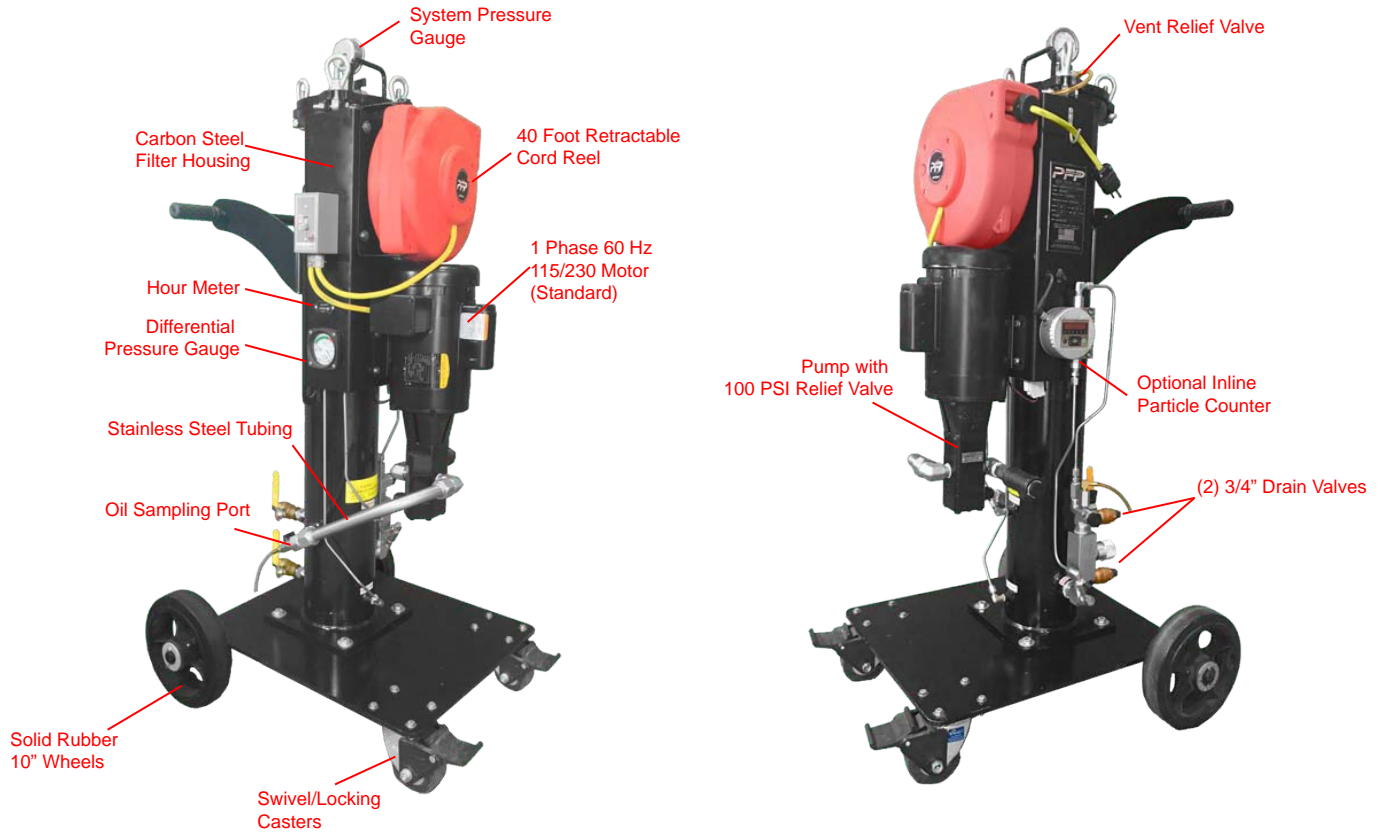


Precision Filtration Products | Pennsburg, PA  
215-679-6645 | 215-679-6648  
sales@pfpusa.com | www.pfpusa.com



# LCFC Filter Cart

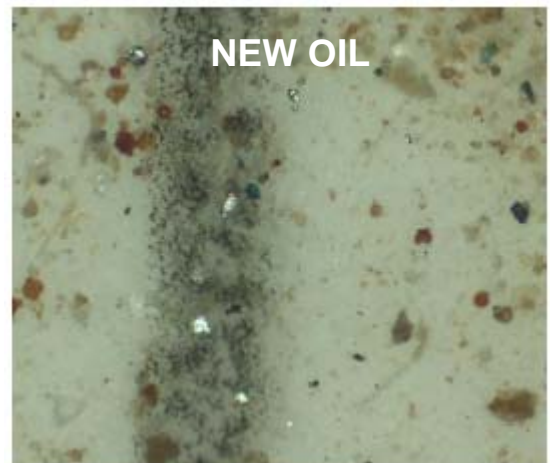
Flow Rates available in 1 GPM, 5 GPM, 11 GPM and 22 GPM



## Particulate and Water Removal from New Oil

New oil may not be suitable for use in some hydraulic and lube systems because of contamination caused during the production and transportation process. High levels of particulate and water contamination may collect in the oil causing it to be out of code. A common ISO Code for new oil is 24/22/19.

Our LCFC Filter Cart is ideal for removing free water contamination, as well as, capturing particulate to help you achieve your ISO Cleanliness Codes. If free or dissolved water are present it can lead to and accelerate abrasive wear, corrosion, system failure and many more. All of which lead to costly repairs and downtime.



Precision Filtration Products | Pennsburg, PA  
215-679-6645 | 215-679-6648  
sales@pfpusa.com | www.pfpusa.com



# Reducing ISO Codes

## Cleaner Fluid . . . Longer Component & Fluid Life . . . More UpTime!

### Roller Contact Bearing

Laboratory and field tests prove time and again that our filters consistently deliver lower ISO fluid cleanliness codes.

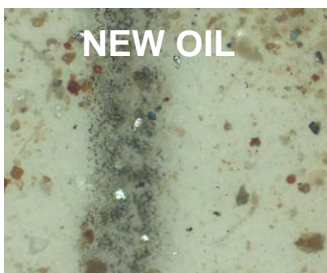
Improving fluid cleanliness means reduced downtime, more reliable equipment, longer fluid life, fewer maintenance hours, and reduces costly component replacement or repair expenses.

### Develop a Fluid Cleanliness Target

PPF will help you develop a plan to achieve and maintain target fluid cleanliness. Arm yourself with the support, training, tools and practices to operate more efficiently, maximize uptime and save money.

### New Oil is Typically Dirty Oil . . .

New oil can be one of the worst sources of particulate and water contamination.



24/22/19 is a common ISO code for new oil which is not suitable for hydraulic or lubrication systems. A good target for new oil cleanliness is 16/14/11.

Current ISO Code	Target ISO Code	Target ISO Code	Target ISO Code	Target ISO Code
	2 x Life	3 x Life	4 x Life	5 x Life
28/26/23	25/22/19	22/20/17	20/18/15	19/17/14
27/25/22	23/21/18	21/19/16	19/17/14	18/16/13
26/24/21	22/20/17	20/18/15	19/17/14	17/15/12
25/23/20	21/19/16	19/17/14	17/15/12	16/14/11
25/22/19	20/18/15	18/16/13	16/14/11	15/13/10
23/21/18	19/17/14	17/15/12	15/13/10	14/12/9
22/20/17	18/16/13	16/14/11	15/13/10	13/11/8
21/19/16	17/15/12	15/13/10	13/11/8	-
20/18/15	16/14/11	14/12/9	-	-
19/17/14	15/13/10	13/11/8	-	-
18/16/13	14/12/9	-	-	-
17/15/12	13/11/8	-	-	-
16/14/11	13/11/8	-	-	-
15/13/10	13/11/8	-	-	-
14/12/9	13/11/8	-	-	-

### Hydraulic Component

Current ISO Code	Target ISO Code	Target ISO Code	Target ISO Code	Target ISO Code
	2 x Life	3 x Life	4 x Life	5 x Life
28/26/23	25/23/21	25/22/19	23/21/18	22/20/17
27/25/22	25/23/19	23/21/18	22/20/17	21/19/16
26/24/21	23/21/18	22/20/17	21/19/16	21/19/15
25/23/20	22/20/17	21/19/16	20/18/15	19/17/14
25/22/19	21/19/16	20/18/15	19/17/14	18/16/13
23/21/18	20/18/15	19/17/14	18/16/13	17/15/12
22/20/17	19/17/14	18/16/13	17/15/12	16/14/11
21/19/16	18/16/13	17/15/12	16/14/11	15/13/10
20/18/15	17/15/12	16/14/11	15/13/10	14/12/9
19/17/14	16/14/11	15/13/10	14/12/9	14/12/8
18/16/13	15/13/10	14/12/9	13/11/8	-
17/15/12	14/12/9	13/11/8	-	-
16/14/11	13/11/8	-	-	-
15/13/10	13/11/8	-	-	-
14/12/9	13/11/8	-	-	-

