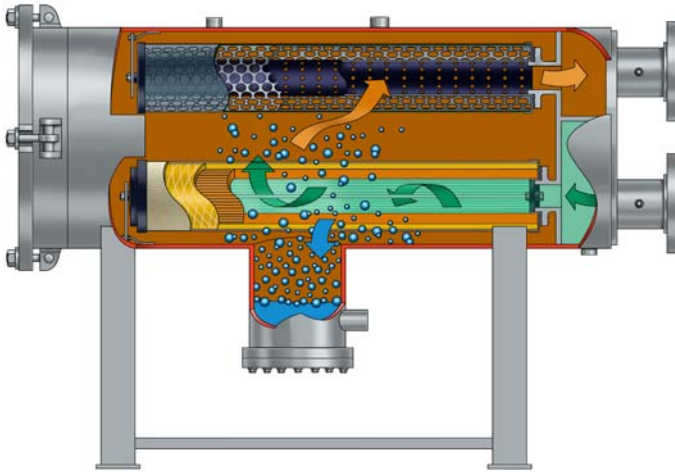


Horizontal Coalescer Separators for Fixed Installations API-1581, Category C, Type S, 5th Edition

HCS Series (End Opening)



Facet HCS Series (end opening) two-stage horizontal coalescer separator housings are mechanical devices to filter solids and separate water from fuels where water content is a problem. They have been qualified after full-scale, witnessed testing to the Fifth Edition of API Bulletin 1581.

RELIABLE PERFORMANCE

Facet coalescer separators are a result of over 50 years of continuous research and development to meet the ever demanding performance requirements in the aviation fuel handling industry. This, along with proven field performance, demonstrates Facet's ability to provide quality products that meet current specifications as well as specific customer requirements for installations in refineries, bulk storage, terminals, heliports, airports, etc.

STANDARD HOUSING DESIGN

- Welded carbon steel construction—other materials available on request
- ASME Code, Section VIII construction, stamped and certified
- Design pressure: 150 psi @ 250°F—other design pressures available on request
- Inlet, outlet and drain connections permanently marked
- Interior: Epoxy coated (MIL-C-4556)
- Exterior: Prime coated
- Swing bolt head closures
- Hinged end opening cover furnished on 24" (610 mm) OD and larger
- Flanged inlet and outlet connections
- Buna-N o-ring closure seal
- Choice of rod or screw base coalescer cartridge mounting styles
- 4" inlet/outlet cleanout/inspection connections (when permitted by design)
- Knife edge cartridge mounting seals
- Spider plate attached to vessel wall

OPTIONS

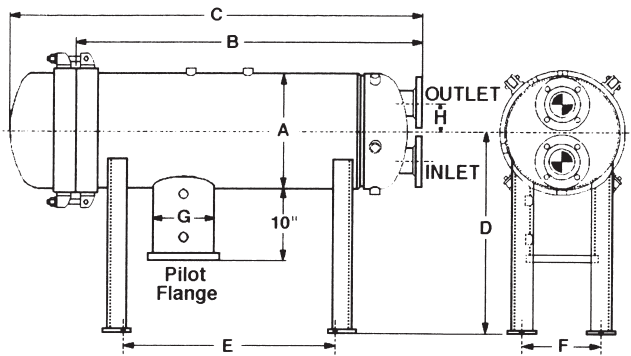
- * Automatic air eliminator with check valve
- * Pressure relief valve
- * Differential pressure gauge
- Pilot control valve
- Pilot tester
- Water slug control valve
- Electrical water-level alarm
- Water drain valves
- Liquid level gauge
- Blind cover for pilot control mounting flange
- Immersion heaters
- Sampling probe

(* Mandatory for 5th Edition)

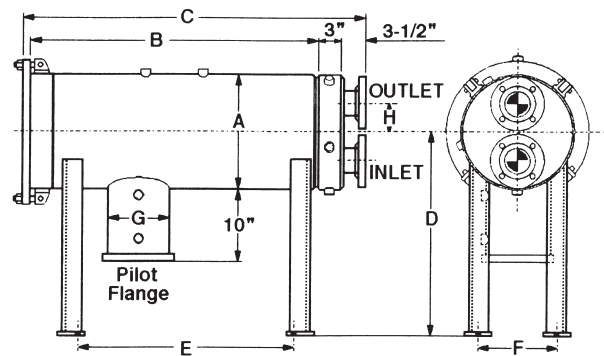
Due to our continuing program of improvement, specifications are subject to change without notice.

Horizontal Coalescer Separators for Fixed Installations API-1581, Category C, Type S, 5th Edition

HCS Series (End Opening)



STYLE A



STYLE B

DATA

MODEL NUMBER ⁽¹⁾	FLOW RATE		REQUIRED CARTRIDGES				HOUSING LIQUID VOLUME		HOUSING DRY WEIGHT		HOUSING TYPE
	AVIATION FUEL API 1581, CATEGORY C, TYPE S		COALESCER		SEPARATOR*		gals.	ltrs.	lbs.	kgs.	
	gpm	lpm	qty.	model	qty.	model					
HCS-222-1324	100	400	2	CAA22-5SB	1	SS324FA-5	22	83	450	205	Style B - Flat
HCS-322-1422	150	567	3	CAA22-5SB	2	SS422FB-5	30	113	475	215	Style B - Flat
HCS-333-1436	243	946	3	CAA33-5SB	1	SS436FB-5	40	151	500	227	Style B - Flat
HCS-343-133	300	1135	3	CAA43-5SB	1	SS633FB-5	58	220	775	352	Style B - Flat
HCS-443-143	400	1514	4	CAA43-5SB	1	SS643FF-5	72	272	800	363	Style B - Flat
HCS-556-233	600	2271	5	CAA56-5SB	2	SS633FF-5	120	454	1350	613	Style A - Dished
HCS-756-248	1000	3785	7	CAA56-5SB	2	SS648FF-5	171	647	1450	657	Style A - Dished
HCS-856-340	1200	4542	8	CAA56-5SB	3	SS640FF-5	276	1144	1550	703	Style A - Dished
HCS-1056-348	1500	5678	10	CAA56-5SB	3	SS648FF-5	314	1188	1600	725	Style A - Dished

Other sizes available on request.

* **Separators:** If preferred, Teflon® separator cartridges can be used in place of Synthetic. The separator cartridge model number's prefix would change from **SS** to **ST**.

Example: SS324FA-5 would change to ST324FA-5.

DIMENSIONS

MODEL NUMBER ⁽¹⁾	INLET/ OUTLET DIAMETER		DIMENSIONS ⁽²⁾															
			A		B		C		D		E		F		G		H	
	in.	mm.	in.	mm.	in.	mm.	in.	mm.	in.	mm.	in.	mm.	in.	mm.	in.	mm.	in.	mm.
HCS-222-1324	2	51	14	356	35½	902	40	1016	28	711	18	457	9	229	8⅝	219	4½	114
HCS-322-1422	3	76	16	406	35½	902	40	1016	28	711	18	457	11	279	8⅝	219	5	127
HCS-333-1436	3	152	16	406	47	1194	52	1321	28	711	30	762	11	279	8⅝	219	5	127
HCS-343-133	4	152	18	457	60¼	1530	61½	1562	29	737	38	965	14	356	8⅝	219	5	127
HCS-443-143	4	152	20	508	60¼	1530	61½	1562	30	762	38	965	14	356	8⅝	219	6	152
HCS-556-233	6	203	22	559	74¾	1886	85	2159	31	787	45	1143	15	381	8⅝	219	6	152
HCS-756-248	6	203	26	660	74¾	1900	86½	2197	33	838	45	1143	18	458	8⅝	219	8	203
HCS-856-340	6	203	32	813	76¾	1950	90¼	2292	36	914	45	1143	24	610	8⅝	219	8	254
HCS-1056-348	8	254	34	863	77¼	1962	91¼	2318	37	940	45	1143	26	660	8⅝	219	8	254

All dimensions, weights and volumes are approximate and are for estimating purposes only.

REFERENCE NOTES:

- (1) Model numbers include housing style and required cartridge mounting.
- (2) Dimensions are based on standard 150 psi housing design pressure, are approximate and should not be used for installation purposes.

NOTES:

- All elements are mounted against knife edge seals.
- Nameplate to be stamped with API classified data.
- Inlet chamber to be hydrostatic tested at 115 psi (793 kPa).
- Coalescer cartridges are offered with a choice of rod or screw base mounting. The suffix "SB" will be added to the coalescer model number when screw base is required.

Example: CAA33-5 = Rod Mount
CAA33-5SB = Screw Base

Teflon is a registered trademark of E. I. DuPont De Nemours Co. Inc.

Due to our continuing program of improvement, specifications are subject to change without notice.