

# Precision Filtration Products

YOUR ONE  FOR FILTERS.

## GF-SERIES

### GF SERIES PARTICULATE FILTER VESSELS

These industrial vessels are constructed of carbon or stainless steel and made to handle many kinds and degree of contamination. We manufacture to your specifications and needs in a wide variety of flow ranges. Flow ranges from 1 GPM to 3,000 GPM. Standard or custom designed to meet your application and built to last.

#### VERSATILITY

DESIGNED AND BUILT FOR ALL YOUR LIQUID FILTERING APPLICATIONS, ABILITY TO USE ANY FILTER MEDIA TYPE, INCLUDING:

- PLEATED PAPER FILTER ELEMENT VESSELS – ELEMENT LENGTHS 18", 36", 39" & 44"
- BAG FILTER ELEMENT VESSELS – BAG SIZES #1 (14" LG) AND #2 (24" LG)
- STRING WOUND FILTER ELEMENT VESSELS – ELEMENT LENGTHS 10", 20", 30", OR 40"

#### MANUFACTURED WITH THREE DIFFERENT CLOSURES:

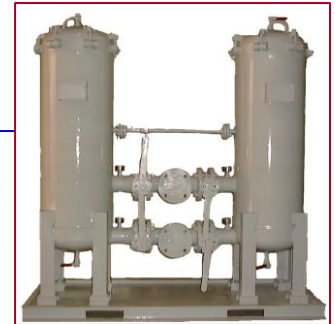
- ELLIPTICAL "T" BOLT CLOSURES
- ANSI FLANGED CLOSURES WITH BLING FLANGE
- FLAT HEAD (FABRICATED CLOSURE)
- PRESSURES & TEMPERATURES TO ASME STANDARDS
- LOW SERVICE PRESSURE BELOW 150 PSI AND VACUUM CHAMBERS
- 150 PSI SERVICE PRESSURE 150/300 ANSI IN & OUT
- 300 PSI AND GREATER SERVICE PRESSURE 300/600 ANSI IN & OUT

#### APPLICATIONS

- HYDRAULIC OILS
- ENGINE OILS
- DIESEL FUELS
- FUEL OILS
- FULL FLOW LUBE OIL
- AVIATION FUELS
- INSULATING OILS
- TURBINE OILS



GF-6



GF-6-DPLX



GF-1-DPLX-DP-SP

#### ACCESSORY ITEMS

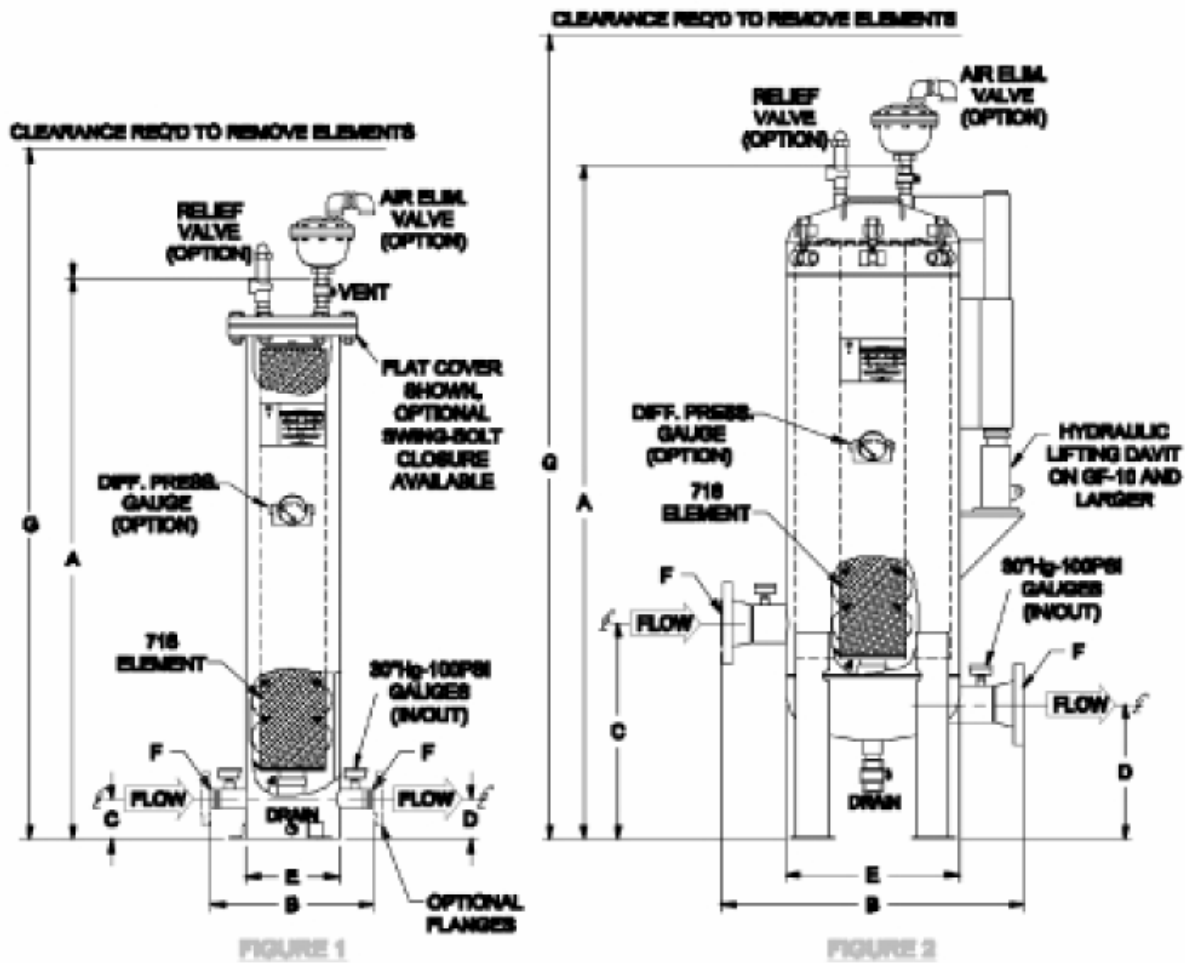
- ASME CODE STAMP
- PRESSURE RELIEF VALVES TO HANDLE THERMAL EXPANSION
- DIFFERENTIAL PRESSURE GAUGES
- DIRTY FILTER ALARMS
- AUTOMATIC AIR ELIMINATORS
- IMMERSION HEATERS
- LIQUID LEVEL GAUGES
- MULTI-PORT VALVES FOR DUAL INSTALLATION
- PORTABLE SKIDS
- PUMPS AND MOTORS FOR SKID OR SIDE VESSEL MOUNTING
- FULL RANGE OF AUTOMATED AND ELECTRICAL CONTROLS
- CORROSIVE APPLICATION ADDER



GF-2-DP

# Precision Filtration Products

YOUR ONE  FOR FILTERS.



VESSEL MODEL NUMBER	RATED FLOW (GPM)	718 ELEMENT		FIGURE NUMBER	DIMENSIONS (INCHES)						WEIGHT WITH SKID (LBS.)	
		TOTAL QTY	TOTAL STACKS		A	B	C	D	E	F		G
GF-1	75	1	1	1	55 1/2	15	3 3/4	3 3/4	8 5/8	1 1/2	51 1/2	285
GF-2	150	2	1	1	61 1/2	15	3 3/4	3 3/4	8 5/8	2	68 1/2	305
GF-6	450	6	3	2	62 1/2	28	30	12 1/2	18	4	60 1/2	615
GF-10	750	10	5	2	71 1/4	32	30	10	20	5	69 1/4	1100
GF-15	1200	15	8	2	73 1/4	38	32	10	24	5	61 1/4	1360
GF-25	1950	25	13	2	80 1/4	42	35	12	30	5	68 1/4	1770
GF-40	3000	40	20	2	87 3/4	45	50	14	35	10	105 3/4	2250
GF-55	4200	55	25	2	95	54	55	15	42	12	113	2800

1. Flow Rate is based on 5 micron filtration at 100 SSU Viscosity at 2 PSID Clean Pressure Drop
2. GF Series filters are designed to accommodate our standard 6" OD x 18" Long elements that are stacked one or two high. Elements are available in longer lengths that eliminate stacking. For example, one 736 element may be used in place of two 718 elements.
3. Dimensions shown are for estimating purposes only. For exact dimensions, obtain certified drawings
4. Flange connections are ANSI 150# raised face. Threaded connections are NPT.