



FOR MAXIMUM WATER REMOVAL, SOLIDS HOLDING CAPACITY AND SHUTDOWN PROTECTION TO ASSURE CLEAN, DRY FUEL

The Facet Fuel-Gard monitor cartridge performs three jobs to assure clean, dry fuel. It absorbs free and emulsified water to less than 2 ppm, removes ultra-fine solids, and shuts down system flow when hit with a localized slug of water. It is designed to flow from the outside to inside at a rate of 1 gallon (3.79 liters) per lineal inch with 2 micron nominal filtration.

Fuel-Gard monitors meet the latest edition of the Institute of Petroleum (I.P.) Specifications and Qualification Procedures—Aviation Fuel Filter Monitors With Absorbent Type Elements.

Fuel-Gard monitors let you know when they need to be replaced. The presence of water or solids in the incoming fuel will be indicated by an increase in the pressure differential or a decrease in the flow rate as the monitor reaches its maximum capacity for solids, water or a combination of both.

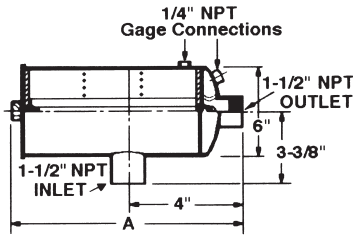
Each monitor cartridge is constructed of various water absorbent media, plus fine filtration layers, wrapped around a molded center tube for balanced flow and structural strength—all encased in a protective outer sock.

The end cap material is of injection molded, glass-filled nylon which provides superior strength and ease of maintenance. This material gives excellent support for the o-ring on the mounting/adaptor end.

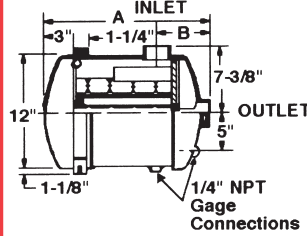
STANDARD HOUSING DESIGN

- Light weight aluminum body construction
- Tested and qualified to meet latest edition of the I.P. Specifications and Qualification Procedures—Aviation Fuel Filter Monitors With Absorbent Type Elements
- Structurally withstands a minimum of 150 psid (10 bars)
- Multi-layered media for increased solids holding, water removal and system shutdown protection
- Less than 0.5 mg/liter of solids in effluent
- Less than 2 ppm of water in effluent
- Buna-N gaskets—Viton available on request
- Not adversely affected by exposure to temperature varying from -65°F to 160°F
- Dimensionally interchangeable with PS Series monitor cartridges designed and qualified to latest I.P. Specification or GNG Series designed and qualified to Military Specification MIL-M-81380C(AS)

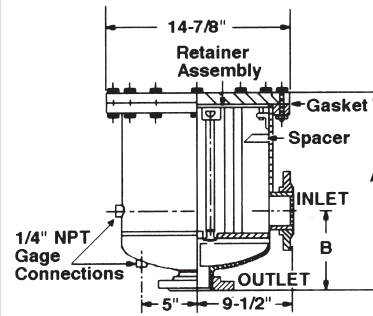
Due to our continuing program of improvement, specifications are subject to change without notice.



MODEL 5



MODEL 20
VICTAULIC COUPLINGS



MODEL 20
150 PSI FLANGED

DATA

PART NUMBER	FLOW RATE		REQUIRED MONITOR MODEL NUMBER ⁽¹⁾		INLET / OUTLET PIPE SIZE	DIMENSIONS				WEIGHT		CLOSURE O-RING PART NO.	
	gpm	lpm	QTY	MODEL		A		B		lbs.	kgs.		
900410	50	189	5	FG-210-4	1 1/2" NPT	14 7/8	359	—	—	7	3.2	048129 & 048130	
900411	75	284	5	FG-215-4	1 1/2" NPT	19 7/8	485	—	—	8	3.6	048129 & 048130	
900412	100	379	5	FG-220-4	1 1/2" NPT	24 7/8	612	—	—	9	4.1	048129 & 048130	
MODEL 20-Victaulic Couplings			QTY	MODEL	VICTAULIC	DIMENSIONS				WEIGHT		CLOSURE O-RING PART NO.	
					in.	mm.	in.	mm.	in.	mm.	lbs.		kgs.
900413	100	378	20	FG-205-4	2	51	11 1/2	292	5 7/8	130	24	10.8	685881
900414	200	757	20	FG-210-4	3	76	16 1/2	419	6 1/2	165	30	13.6	685881
900415	300	1136	20	FG-215-4	3	76	21 1/2	546	6 1/2	165	37	16.8	685881
900416	400	1514	20	FG-220-4	4	102	26 1/2	673	6 1/2	165	44	19.9	685881
900417	500	1893	20	FG-225-4	4	102	31 1/2	800	6 1/2	165	53	24.0	685881
900418	600	2271	20	FG-230-4	4	102	36 1/2	927	6 1/2	165	60	27.2	685881
900419	600	2271	20	FG-230-4	6	152	36 1/2	927	8	203	62	28.1	685881
MODEL 20-150 PSI Flanged			QTY	MODEL	FLANGE SIZE	DIMENSIONS				WEIGHT		CLOSURE O-RING PART NO.	
					in.	mm.	in.	mm.	in.	mm.	lbs.		kgs.
900400	100	378	20	FG-205-4	2	51	14	356	8 1/2	216	71	32.2	691376
900401	200	757	20	FG-210-4	3	76	19	483	9	229	77	34.9	691376
900402	300	1136	20	FG-215-4	3	76	24	610	9	229	84	38.1	691376
900403	400	1514	20	FG-220-4	4	102	29	737	9	229	91	41.3	691376
900404	500	1893	20	FG-225-4	4	102	34	864	9	229	100	45.4	691376
900405	600	2271	20	FG-230-4	4	102	39	991	9	229	107	48.5	691376
900406	600	2271	20	FG-230-4	6	152	39	991	9 1/2	241	110	49.9	691376

All dimensions and weights are approximate and should be used for estimating only.

⁽¹⁾ Housings can be fitted with PS Series monitor cartridges upon request.

MODEL 20 - Victaulic Couplings: Operating pressure 175 psi maximum. Inlet and outlet fittings for victaulic couplings.

MODEL 20 - 150 psi Flanged: ASME code stamped for operating pressure of 150 psi with 150# ASA flanged inlet and outlet. Fitted with Fuel-Guard monitor cartridges as standard. Victaulic connections and steel construction are available on request. Spacer not required on 100 gpm (378 lpm) unit.