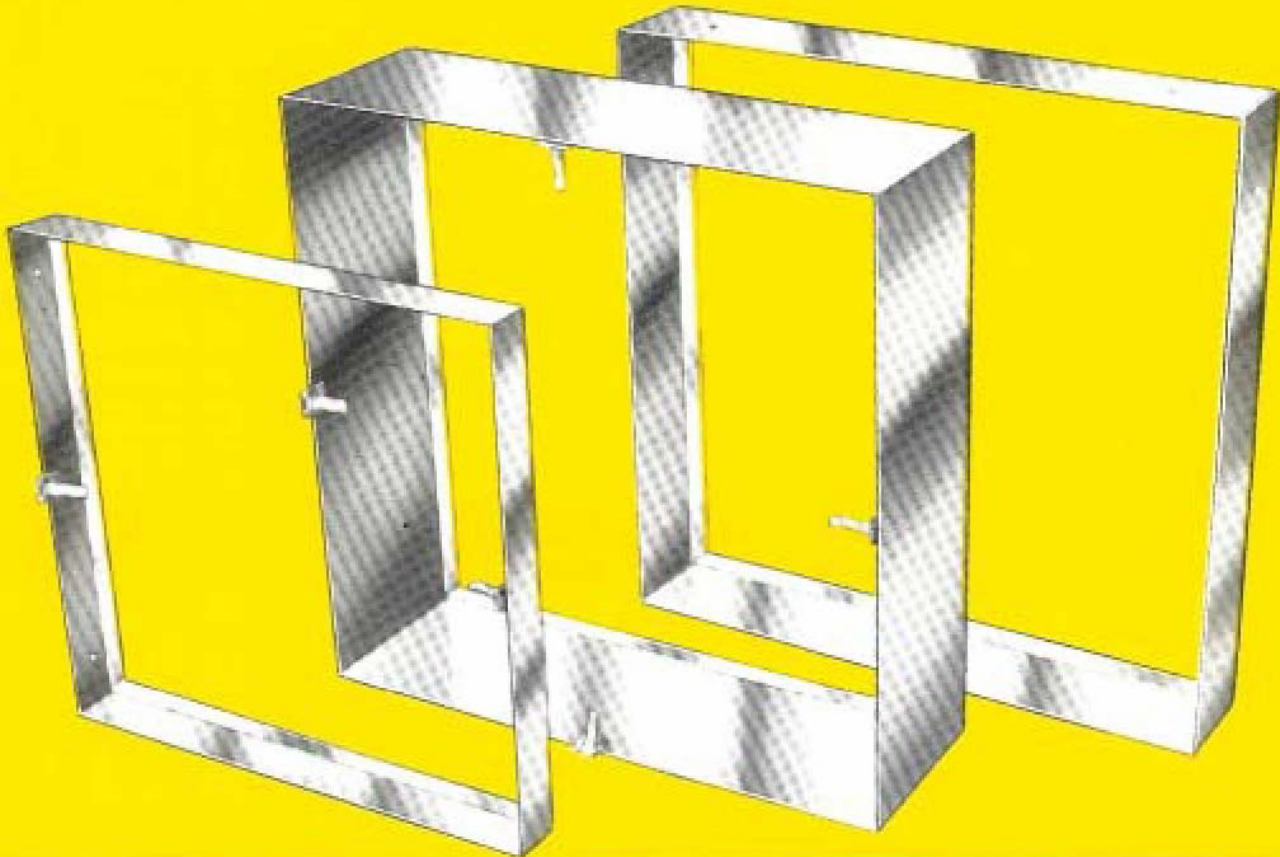
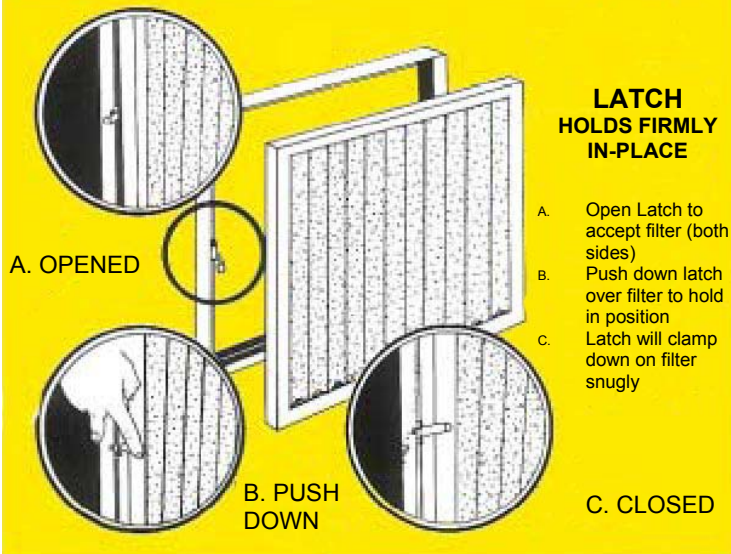


# AIR HANDLING FILTER HOLDING FRAMES



**NO SPECIAL FITTINGS.....ACCEPTS FILTERS EASILY!!**



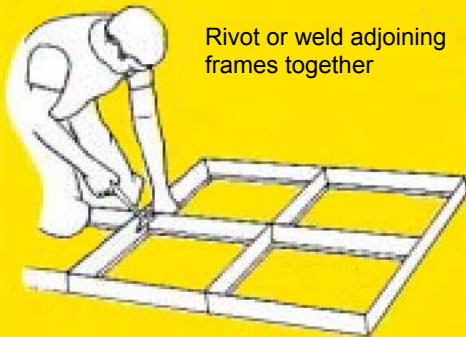
## STOCK SIZE FILTER FRAMES

16" x 20" x 2"	16" x 16" x 4"
16" x 25" x 2"	16" x 25" x 4"
20" x 20" x 2"	20" x 20" x 4"
20" x 25" x 2"	20" x 25" x 4"
24" x 24" x 2"	24" x 24" x 4"

## CUSTOM SIZE FILTER FRAMES

Special size frames are also available. Call and give us your specifications.  
**888-679-6645**

## INSTALLATION



Rivet or weld adjoining frames together

Simple Installation of a straight bank of frames forming a partition across the air intake duct



## FEATURES and SPECIFICATIONS—3401 FRAMES

**STOCK SIZE:** Filter holding frames are available in stock size depths of 2" and 4" (See stock sizes shown)

**CUSTOM SIZES AND DEPTH FRAMES** are also available to give versatility—example a 3" depth frame may be used to hold both a 2" depth pleat and a 1" depth bag type filter

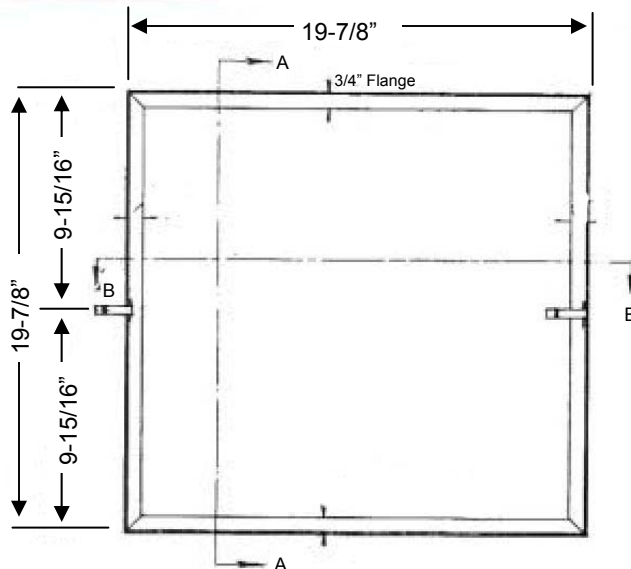
**POLYURETHANE FOAM GASKETS**—around entire perimeter of each frame assure airtight seal between filter and frame. (Must be specified with order)

**EASY INSTALLATION**—Frames are easily assembled into a filter bank of a required capacity by riveting or welding adjoining frames together. (See illustration on this sheet)

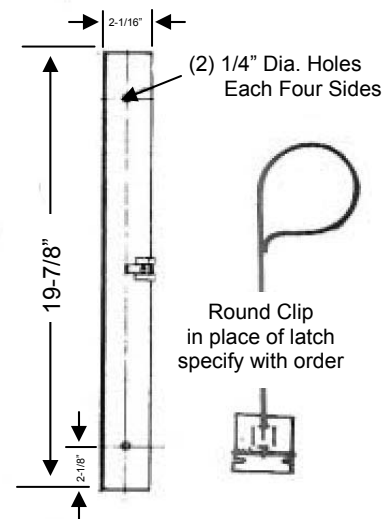
**LATCHES**—Clamp against filters to hold filter firmly in place. (2) latches are furnished with each stock frame (must be specified on order). Round clips are also available in place of latches—must also be specified with order.

**CONSTRUCTION**—16 gauge metal assures rigid assembly for multiple welding or riveting of adjoining frames.

## TECHNICAL SPECIFICATIONS OF A 20" x 20" x 2" STOCK FRAME For 4" depth stock frame - simply add 2" to depth dimension of frame show below



ELEVATION



Section A-A



(1) 3/16" Dia. Hole on Each Side  
(2) used to mount tight latch with rivot

Section B-B