



Better Air is Our Business®

AmericanAirFilter® Industrial Panel Filter

1" and 2" Industrial Grade Disposable Air Filters

- **One-piece, high integrity, U-channel frame**
- **AmericanAirFilter® fiberglass media**
- **Ideal for heavy workloads**
- **Double-sided expanded metal**

Industrial Panel Filters provide the performance you expect from AmericanAirFilter® products along with the durability and rigidity you demand in an industrial-grade, disposable panel filter.

Industrial Panel Filters are constructed with heavy-duty, premium grade fiberglass media. Premium grade fiberglass has more fibers to ensure Industrial Panel Filter media offers high arrestance and cleans the air better than competitive filters.

Premium grade fiberglass also offers higher dust holding capacity which means longer service life and lower operating costs.

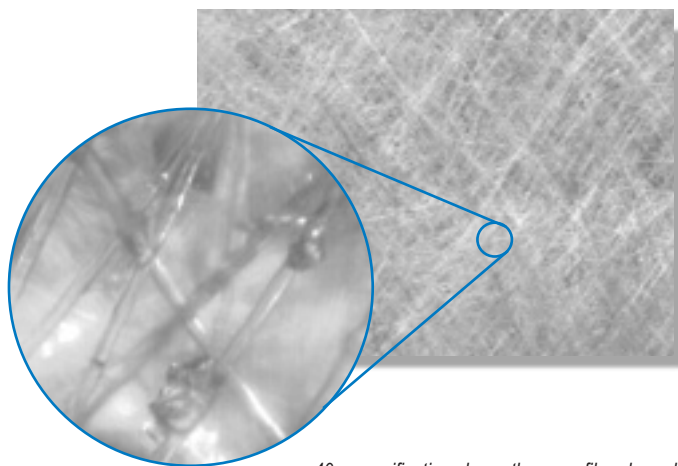
Compression resistant glass fibers decrease media pad deterioration allowing a slower rise in resistance as the filter collects dirt particles. A lower rise in resistance extends the life of the filter.

Premium Performance with Extra Strength

The one-piece frame design ensures corner integrity during handling, installation and operation. It is made from durable, high strength chipboard that will stand up to harsh conditions.

Each Industrial Panel Filter is assembled with continuous beads of hot-melt adhesive applied to the frame's inside perimeter on both the air-entering and air-leaving sides, to firmly secure the pad/retainer assembly to the frame. Each Industrial Panel Filter contains AAF-made fiberglass media ensuring that you receive the filtration efficiency you expect.

The Industrial Panel Filter is built for the most demanding conditions with a double-sided, expanded-metal retainer, on both the air-entering and air-leaving sides, for maximum rigidity and durability. It is ideal for turbulent conditions and higher airflow rates.



40x magnification shows the spun fiberglass skin of the Industrial Panel Filter pad.

Precision Filtration Products
YOUR ONE  FOR FILTERS

AmericanAirFilter®

Industrial Panel Filter

Product Information

Part No.	Nominal Size (in.)	Actual Size (in.)
223-035-251	8 x 16 x 1	7 ⁷ / ₈ x 15 ⁵ / ₈ x 3/4
223-041-251	8 x 30 x 1	7 ⁷ / ₈ x 29 ⁷ / ₈ x 3/4
223-100-251	10 x 10 x 1	9 ⁷ / ₈ x 9 ⁷ / ₈ x 3/4
223-200-251	10 x 20 x 1	9 ⁷ / ₈ x 19 ⁵ / ₈ x 3/4
223-208-251	10 x 24 x 1	9 ⁷ / ₈ x 23 ⁵ / ₈ x 3/4
223-210-251	10 x 25 x 1	9 ⁷ / ₈ x 24 ⁵ / ₈ x 3/4
223-214-251	10 x 30 x 1	9 ⁷ / ₈ x 29 ⁵ / ₈ x 3/4
223-276-251	10 x 36 ¹ / ₄ x 1	9 ⁷ / ₈ x 36 ¹ / ₄ x 3/4
223-303-251	12 x 12 x 1	11 ⁷ / ₈ x 11 ⁷ / ₈ x 3/4
223-308-251	12 x 16 x 1	11 ⁷ / ₈ x 15 ⁵ / ₈ x 3/4
223-294-251	12 x 18 x 1	11 ⁷ / ₈ x 17 ⁵ / ₈ x 3/4
223-314-251	12 x 20 x 1	11 ⁷ / ₈ x 19 ⁵ / ₈ x 3/4
223-319-251	12 x 24 x 1	11 ⁷ / ₈ x 23 ⁵ / ₈ x 3/4
223-321-251	12 x 25 x 1	11 ⁷ / ₈ x 24 ⁵ / ₈ x 3/4
223-323-251	12 x 30 x 1	11 ⁷ / ₈ x 29 ⁵ / ₈ x 3/4
223-324-251	12 x 30 ³ / ₄ x 1	11 ⁷ / ₈ x 30 ³ / ₄ x 3/4
223-379-251	14 x 14 x 1	13 ⁷ / ₈ x 13 ⁷ / ₈ x 3/4
223-371-251	14 x 20 x 1	13 ⁷ / ₈ x 19 ⁵ / ₈ x 3/4
223-412-251	14 x 24 x 1	13 ⁷ / ₈ x 23 ⁵ / ₈ x 3/4
223-375-251	14 x 25 x 1	13 ⁷ / ₈ x 24 ⁵ / ₈ x 3/4
223-410-251	14 x 30 x 1	13 ⁷ / ₈ x 29 ⁵ / ₈ x 3/4
223-400-251	15 x 20 x 1	14 ⁷ / ₈ x 19 ⁵ / ₈ x 3/4
223-406-251	15 x 25 x 1	14 ⁷ / ₈ x 24 ⁵ / ₈ x 3/4
223-596-251	15 x 30 x 1	14 ⁷ / ₈ x 29 ⁵ / ₈ x 3/4
223-415-251	15 x 30 ³ / ₄ x 1	14 ⁷ / ₈ x 30 ³ / ₄ x 3/4
223-448-251	16 x 16 x 1	15 ⁵ / ₈ x 15 ⁵ / ₈ x 3/4
223-500-251	16 x 20 x 1	15 ⁵ / ₈ x 19 ⁵ / ₈ x 3/4
223-515-251	16 x 22 ¹ / ₄ x 1	15 ⁵ / ₈ x 22 ¹ / ₄ x 3/4
223-524-251	16 x 24 x 1	15 ⁵ / ₈ x 23 ⁵ / ₈ x 3/4
223-600-251	16 x 25 x 1	15 ⁵ / ₈ x 24 ⁵ / ₈ x 3/4
223-603-251	16 x 30 x 1	15 ⁵ / ₈ x 29 ⁵ / ₈ x 3/4
223-643-251	18 x 18 x 1	17 ⁷ / ₈ x 17 ⁷ / ₈ x 3/4
223-627-251	18 x 20 x 1	17 ⁷ / ₈ x 19 ⁵ / ₈ x 3/4
223-635-251	18 x 24 x 1	17 ⁷ / ₈ x 23 ⁵ / ₈ x 3/4

Part No.	Nominal Size (in.)	Actual Size (in.)
223-700-251	20 x 20 x 1	19 ⁵ / ₈ x 19 ⁵ / ₈ x 3/4
223-715-251	20 x 22 ¹ / ₄ x 1	19 ⁵ / ₈ x 22 ¹ / ₄ x 3/4
223-782-251	20 x 24 x 1	19 ⁵ / ₈ x 23 ⁵ / ₈ x 3/4
223-800-251	20 x 25 x 1	19 ⁵ / ₈ x 24 ⁵ / ₈ x 3/4
223-716-251	20 x 30 x 1	19 ⁵ / ₈ x 29 ⁵ / ₈ x 3/4
223-839-251	22 x 22 x 1	21 ⁵ / ₈ x 21 ⁵ / ₈ x 3/4
223-863-251	24 x 24 x 1	23 ⁷ / ₁₆ x 23 ⁷ / ₁₆ x 3/4
223-750-251	24 x 30 x 1	23 ⁷ / ₁₆ x 29 ⁵ / ₈ x 3/4
223-870-251	25 x 25 x 1	24 ⁵ / ₈ x 24 ⁵ / ₈ x 3/4
223-100-252	10 x 10 x 2	9 ⁷ / ₈ x 9 ⁷ / ₈ x 1 ³ / ₄
223-200-252	10 x 20 x 2	9 ⁷ / ₈ x 19 ⁵ / ₈ x 1 ³ / ₄
223-319-252	12 x 24 x 2	11 ⁷ / ₁₆ x 23 ⁷ / ₁₆ x 1 ³ / ₄
223-371-252	14 x 20 x 2	13 ⁷ / ₈ x 19 ⁵ / ₈ x 1 ³ / ₄
223-375-252	14 x 25 x 2	13 ⁷ / ₈ x 24 ⁵ / ₈ x 1 ³ / ₄
223-400-252	15 x 20 x 2	14 ⁷ / ₈ x 19 ⁵ / ₈ x 1 ³ / ₄
223-448-252	16 x 16 x 2	15 ⁵ / ₈ x 15 ⁵ / ₈ x 1 ³ / ₄
223-500-252	16 x 20 x 2	15 ⁵ / ₈ x 19 ⁵ / ₈ x 1 ³ / ₄
223-524-252	16 x 24 x 2	15 ⁵ / ₈ x 23 ⁵ / ₈ x 1 ³ / ₄
223-600-252	16 x 25 x 2	15 ⁵ / ₈ x 24 ⁵ / ₈ x 1 ³ / ₄
223-635-252	18 x 24 x 2	17 ⁷ / ₁₆ x 23 ⁷ / ₁₆ x 1 ³ / ₄
223-700-252	20 x 20 x 2	19 ⁵ / ₈ x 19 ⁵ / ₈ x 1 ³ / ₄
223-782-252	20 x 24 x 2	19 ⁵ / ₈ x 23 ⁵ / ₈ x 1 ³ / ₄
223-800-252	20 x 25 x 2	19 ⁵ / ₈ x 24 ⁵ / ₈ x 1 ³ / ₄
223-716-252	20 x 30 x 2	19 ⁵ / ₈ x 29 ⁵ / ₈ x 1 ³ / ₄
223-863-252	24 x 24 x 2	23 ⁷ / ₁₆ x 23 ⁷ / ₁₆ x 1 ³ / ₄
223-870-252	25 x 25 x 2	24 ⁵ / ₈ x 24 ⁵ / ₈ x 1 ³ / ₄

Industrial Panel Filters are available in a wide range of standard sizes; 1" and 2" thickness. Filters made with 1/2" thick media are ordered as special sizes. Special sizes are available in 1/2", 1", and 2" thickness starting with 6 1/2" x 8" face dimensions. Standard sizes are listed in the table above.

Performance Data

Rated Initial Resistance (in. w.g.)

	1/2"	1"	2"
@ 300 FPM	.05	.10	.13
@ 500 FPM	NA	.20	.28
@ 625 FPM	NA	NA	.38

Recommended final resistance is .50" w.g. for each thickness.

Average Arrestance @ 300 FPM

1/2"	1"	2"
65-70%	70-75%	80-85%

All performance data is based on the ASHRAE 52.1-1992 test method. Performance tolerances conform to Section 7.4 of ARI Standard 850-93.

Underwriters Laboratories Classification

Industrial Panel Filters are UL Class 2. Testing was performed according to UL Standard 900 and CAN-4-S111.

Operating Temperature Limits

Industrial Panel Filters are designed for continuous operating temperatures up to 150°F (66°C).



10300 Ormsby Park Place Suite 600
Louisville, Kentucky 40223-6169
www.aafintl.com

Customer Service 888.AAF.2003
Fax 888.223.6500

ISO-9001 Certified Firm

AAF has a policy of continuous product research and improvement and reserves the right to change design and specifications without notice.

©2006 AAF International
AFP-1-141A APR '06 QG 2M